



تاریخ: ۱۴۰۱/۱۰/۰۵

شماره: Ac/۱۹۷۸۴-۱

ریاست محترم سازمان صنعت معدن تجارت استان اردبیل

باسلام

احتراماً به استحضار می‌رساند در جهت اجرای طرح توسعه جواز تاسیس خود کاتالوگ و پیش فاکتور خط تولید HPL به حضور ایفاد می‌گردد لذا خواهشمند است دستورات و اقدامات لازم جهت همکاری و صدور مجوزهای را مبذول فرمائید.



بسمه تعالی

حکایت بسمت حضرت محمد (ص)

محمد رسول الله است

ابراهیم

۱۴۰۱/۱۰/۰۷

۰۹۱۴۴۵۵۹۵۷۵

# YUANFONG INDUSTRY LIMITED

## PROFORMA INVOICE

Invoice No:20221218301

Date:18/12/2022

Sell To: ARIA CHOOB SAVALAN

### Description of Goods:

Item No.	Quantity	Unit Price	Amount
12 Layers HPL Press Machine (HPL size:1500x4100mm)	1 set	EUR1,372,000	EUR1,372,000
Super Heat Water System for HPL Press	1 set	EUR 385,000	EUR 385,000
Sanding machine (5 feet)	1 set	EUR 223,000	EUR 223,000
Sawing Machine (5x14 feet)	1 set	EUR 222,000	EUR 222,000
<b>Total Amount</b>	<b>FOB SHANGHAI</b>	<b>EUR 2,202,000</b>	

### Total Value:

EURO Dollar two million and two hundred two thousand only.

### Payment Terms :

30% by T/T in advance ,30%by T/T within two months after receive the advance payment ,40% by T/T before delivery

### Delivery Term:

200days after receiving advance payment.

### Packing:

Small and important parts packed with plywood case, large and common parts bundled and uncovered.

### Others:

Buyer pay the round-trip flight tickets,room and food.

### BANK INFORMATION:

SWIFT CODE: HSBCHKHCHK

BANK ADD: 1 Queen's Road Central, Hong Kong

BANK NAME: HSBC Hong Kong

COMPANY NAME: YUANFONG INDUSTRY LIMITED

COMPANY ACCOUNT: 848 777017 838

SIGNED BY

Buyer

SIGNED BY

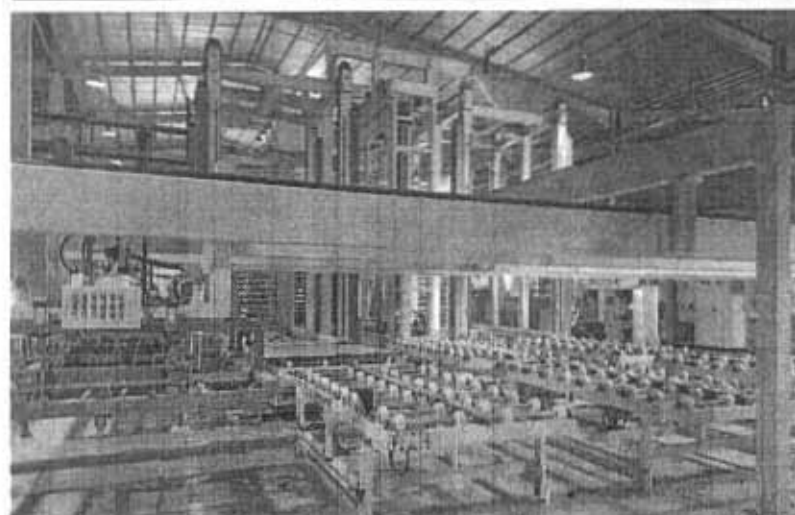
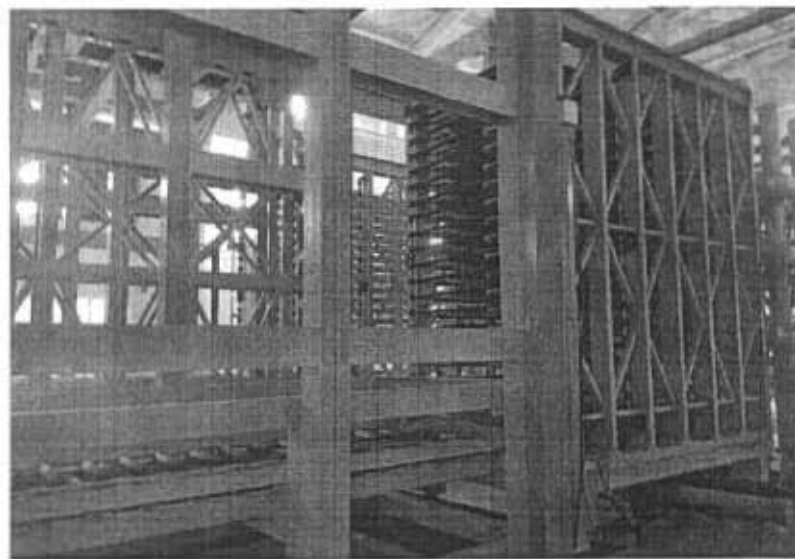
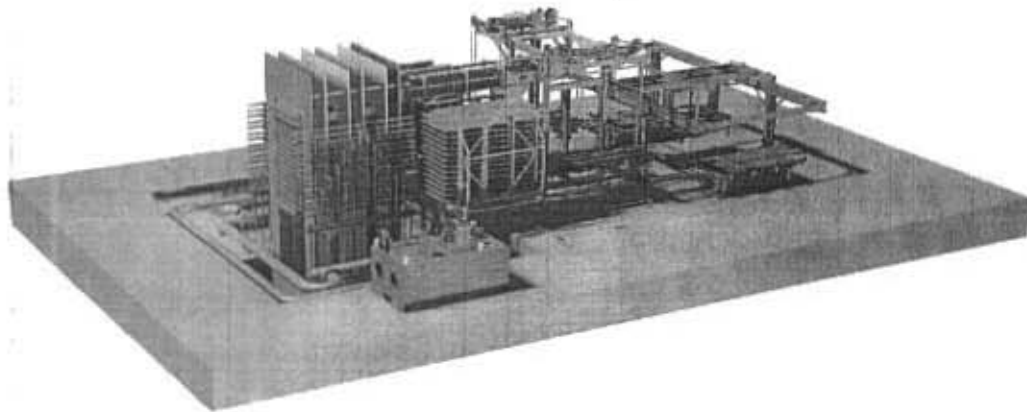
Seller

# **HALLMARK**

Quotation Profile  
Date:2022-11-29

Contact:Mr. William Lu  
MOB/Whatsapp:0086(18861411873)  
Email:yuanfong02@yahoo.com

## **5×14 FEET 12 LAYER HPL PRESS LINE**



## **5×14 FEET 12 LAYER HPL PRESS LINE**

### **▶ Part.1 Quotation section**

#### **·1.1 Quotation**

### **▶ Part.2 Description of products**

#### **·2.1 High Pressure Laminate Press Line 12 Layers**

#### **·2.2 5 FEET Sanding Machine**

#### **·2.3 5×14 FEET Sawing Machine**

### **▶ Part.3 Packing & Shipping**

#### **·3.1 Packing**

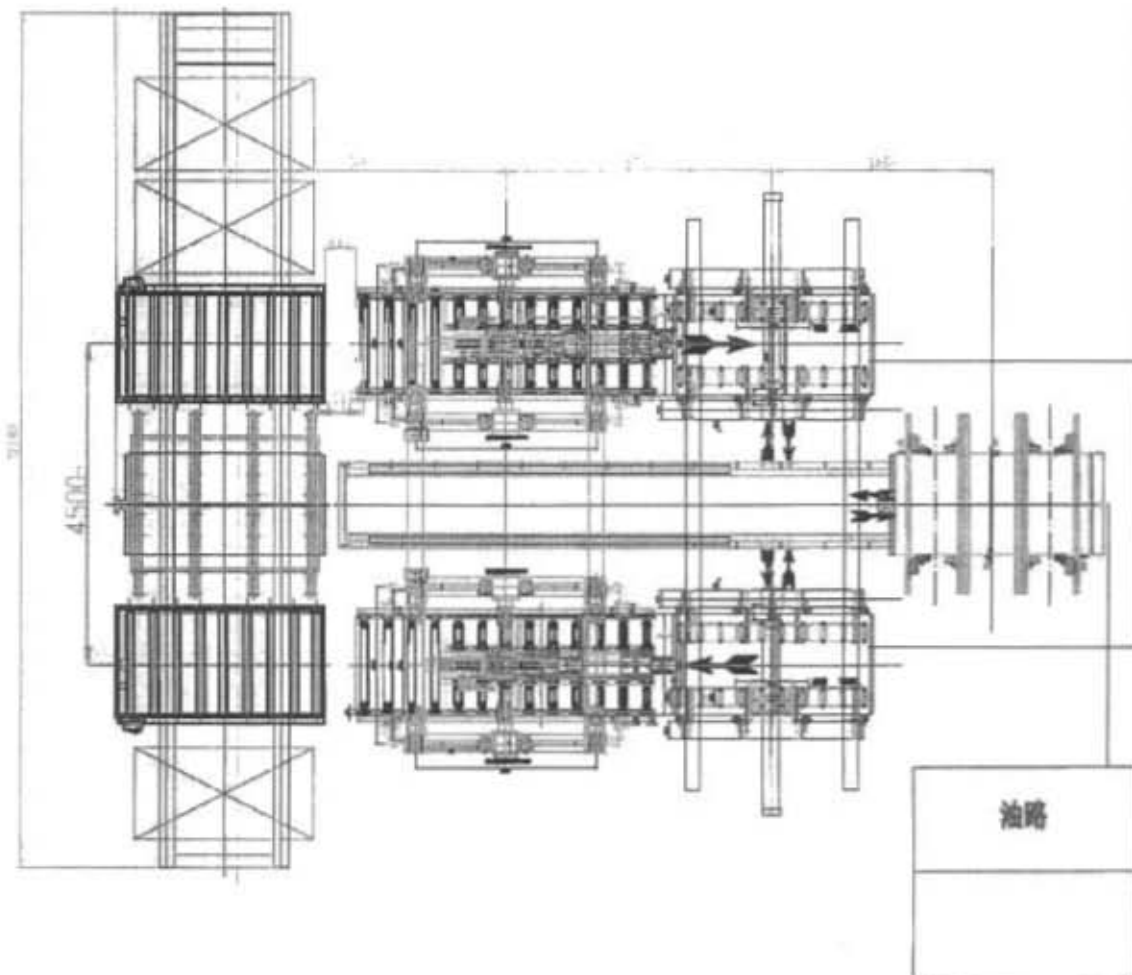
#### **·3.2 Shipping**

## Part 2

## Description of products

### 2.1 High Pressure Laminate Press Line 12 Layers

#### 2.1.1 Production line layout:



**2.1.2 Technical data:****1. Hot press**

Main parts	Item Name	Data
Hot Press	Pressure	50000KN
	Product size	1500*4100mm
	Layers	12 layers
	Daylight	100mm
	Cylinder diameter	∅ 560mm×2400mm
	Number of cylinder	8 sets
	O-ring seals of cylinder	polyurethane
	Working hydraulic oil pressure	28.5 Mpa
	Window Frame Welded by Q235-A	10 pieces 5 groups
	Lowest lay to the ground	850mm
	Closing time	80 seconds
Hot Platen	Hot plate size	1680×4460×65mm (2 in 2 out, diameter of hot plants drilling ∅ 25mm)
	Raw material of hot plates Q345B	13 pieces
	Surface roughness	Ra 3.2
	Surface levelness	±0.1mm
Compressor	Heating medium	super heated water system
	Cooling medium	18℃ water Cooling medium provided by customer
	Compressed air consumption	0.6 MPa 0.5m <sup>3</sup> compressed air provided by costumer

**2.Loader and unloading system**

No.	Item Name	Data
Loader and unloader cage	layer	12 layers
	opening	165 mm
	max load weight	20000 Kg
	moving speed	4.5 m/min
Elevator conveyor table	Lifting speed	5 m/min
	max load weight	3000 kg
	Feeding in and out speed	5.4 m/min

<b>Push and pull device</b>	pushing device	It is by gear motor and rack
	removable device	5.4M/min
<b>Hydraulic station parameters</b>	Vane pump	2 set
	Motor	32KW-4
	Piston pump	25MCY14-1B 2 sets 10MCY14-1B 1set
	Oil tank	6000L
<b>Carrier sheet</b>	Carrier plates sheets size	4460×1700 mm
	Numbers of carrier sheets	25 pieces
	Raw material of carrier plates European brand 450 *5mm	
<b>Vacuum sucker transport system</b>	Vacuum sucker handing system will be new type, fixed position for moving and suck the stainless steel. System use servo motor and liner guide rail.	
	Stroke of lift	250mm
	Moving speed	40M/min
	Vacuum motor	BECKER 40m <sup>3</sup>
	Pneumatic element	AIRTECT TAIWAN
	PLC	SIEMENS
<b>Electric cabinet</b>	Air switch	Schneider
	Contactora	Schneider
	Hot relay	Schneider
	Middle relay	Schneider
	PLC	S7-300 Siemens
	Volt and frequency	380V 3 Phase 50Hz

### 3.HPL line installation

Before guide installation Buyer need prepare next material as follow:

- (1)Crane and lift truck
- (2) Air compressor
- (3) Assist worker
- (4) Hydraulic oil 46# or 32# about 6000L
- (5) Tools:

**[1, welder machine. 2, fire cutter. 3, cutting machine. 4, angle gauge. 5, level gauge.6, electric wires(from major electric box to PLC control system)]**

NOTE: When foundation and all equipments are ready , buyer should send the notification to seller, seller received the notification will dispatch the engineer to buyer's factory.

## 2.1.3 Equipment and supply scope

No.	Item name	Qty
1	hot press	1 set
2	loader cage	1 set
3	unloading cage	1 set
4	pull and push device	1 set
5	vacuum sucker transport system	1 unit
6	hydraulic station	1 unit
7	electric control	1 unit
8	Elevator conveyor table (in and out)	2 sets

## 2.1.4 Super heated water system



### 1. General instruction:

The high-pressure water heating and cooling system is the most ideal equipment in the heating and cooling system of hot press machine. This hot water system can ensure a very accurate recycling in heating and cooling of hot press during production of making decorative HPL, plywood and insulating board. The control center has advantages of advanced intelligence, logical rigor, intelligent control and integrated plant.

The entire system has the following characters:

(1) To ensure the heating supply, fast cooling, uniform and precise in the process of manufacturing decorative HPL, plywood and insulating board, guarantee the quality for the products, and also can improve the economic efficiency.

(2) It can save 30~40% energy consumption compare to the vertical type steam heating. Besides, it can be heated by many kinds of heating source such as steam and thermal oil.

(3) The water is used in a recycling system, so it can save much water resource.

(4) The heating system raise up the temperature gradually, holding temperature stability and slow down the speed of cooling, so that the equipment would not be affected by the shock of exchanging



between heating and cooling.

This high-pressure hot water heating-cooling system is designed by the current advanced technology from Germany, and it wins a technology leadership not only in domestic but also abroad market. It plays a key role in stabilizing the quality and improving the products grade, especially for the high-quality decorative laminated board (HPL).

This system is widely used in the HPL production line. It wins the market with its excellent performance and outstanding value.

## 2.General characters

Content	Hot water heating system
Heating	Raising temperature gradually, accurate controlling.
Cooling	Moderate and low temperature is cooling down gradually.
Energy consumption	Heating cycle start from 120°C, heating energy recycling use can save 1/3 energy.
Effect	Balance heating, uniform, accurate and energy-saving.

## 3.Equipment include in this system

Commodity	Specification	Qty.
Middle temperature tower	14 CBM φ1600×7600 mm	1 Set
high temperature tower	35CBM φ 2000×11500 mm	1 Set
Pneumatic tee valves	DN100-125	2 Set
Pneumatic ball valves	DN25 material stainless steel inside	3 sets
Safety valve	DN50	2 Pcs
Gate valves, check valves, all other kinds of valves	DN125, DN50	55 Pcs
Hot water recycling pump	HPLS100-250-139	2 sets
Plate heat exchanger	100 m <sup>2</sup> , weld type 316L	1 set
Electrical cabinet for controlling temperature	PLC(Siemens), Cables	1 Set
Pressure meter		2 Sets
Temperature meter		2 Sets
Pipe Distance from SHWS to press machine in 30m , over 30m extra cost will pay by buyer		

### **Remark: This system doesn't include:**

1. Installation for keeping warm
2. Materials for keeping warm
3. Cooling tower should be prepared by buyer at 200 CBM
4. Pipes for connecting from cooling tower to press machine

## Performance warranty

Heating:

40-165 °C 15mins ±10% (high temperature tank water more than 195 °C)

Cooling:

165-40 °C 20mins ±10%(cold water temperature no more than 25 °C )

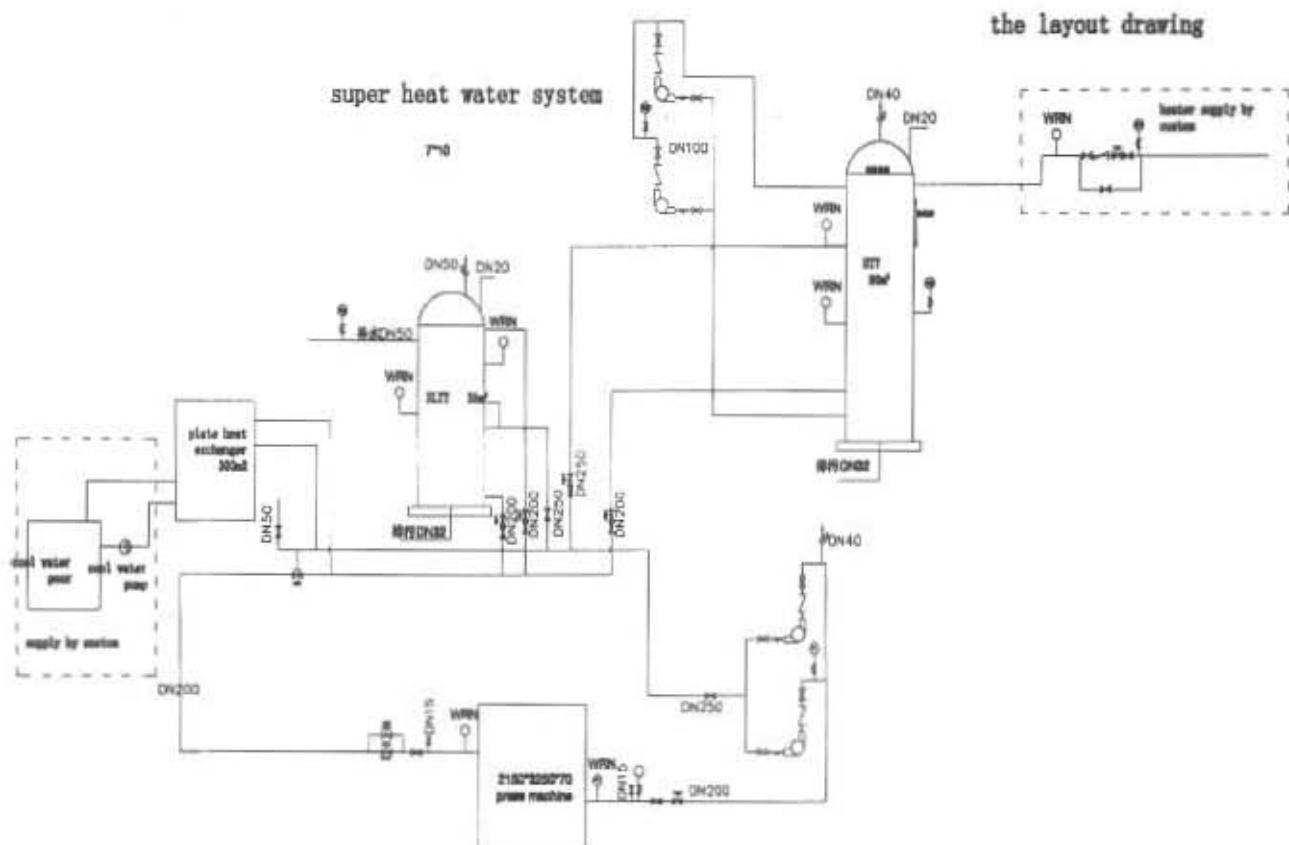
165-40 °C 30mins ±10%(cold water temperature no more than 30 °C )

B-5: others

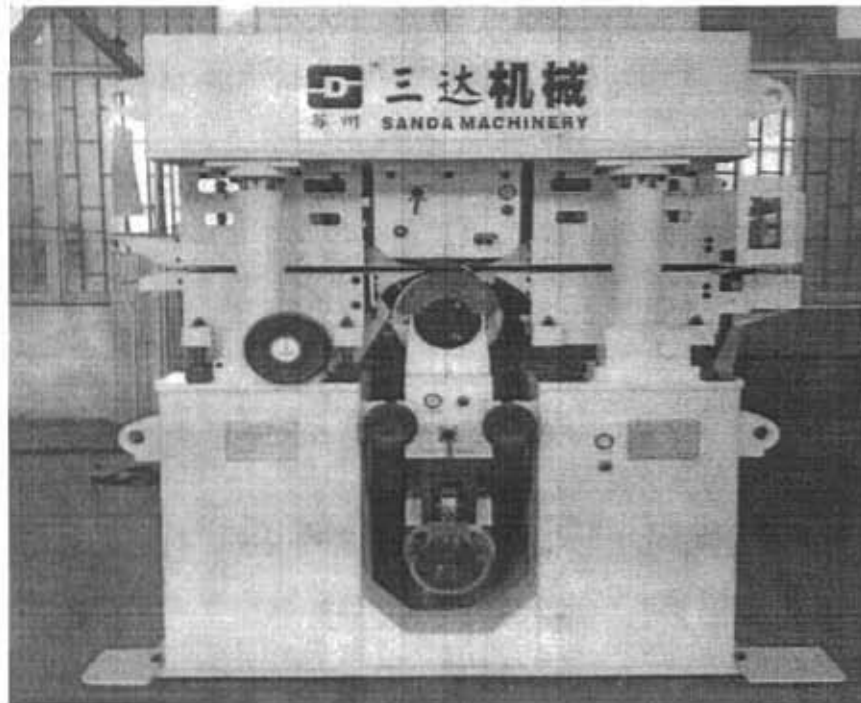
For 20 daylight press line the energy consumption is 1.2M kcal

Normally electric power consumption is 50KW MAX 80KW

## Heating and cooling system for HPL line



## **2.2 5 FEET Sanding Machine**



### **2.2.1 General introduction**

On the basis of understanding the Chinese market, our company cooperates with China well-known company SANDA. The company has more than 30 years of experience in the design of this product and a professional technical team for manufacturing, providing high-quality sanding equipment for the wood-based panel and wood processing industries. Especially the HPL sanding machine is in a leading position in China.

The company produces about 65 sanding machines every year, half of them are exported abroad, and has customer in Russia, Vietnam, India, Egypt, Venezuela and other countries. Products are recognized by all the customers.

The sanding machine produced by the latest technology has the characteristics of advanced design, solid structure, convenient operation, simple maintenance and reliable performance.

### **2.2.2 Wide belt sander uses and characteristics**

This type wide belt sander is specially designed for fire proof board (HPL) . Also used for other wood-based panel .

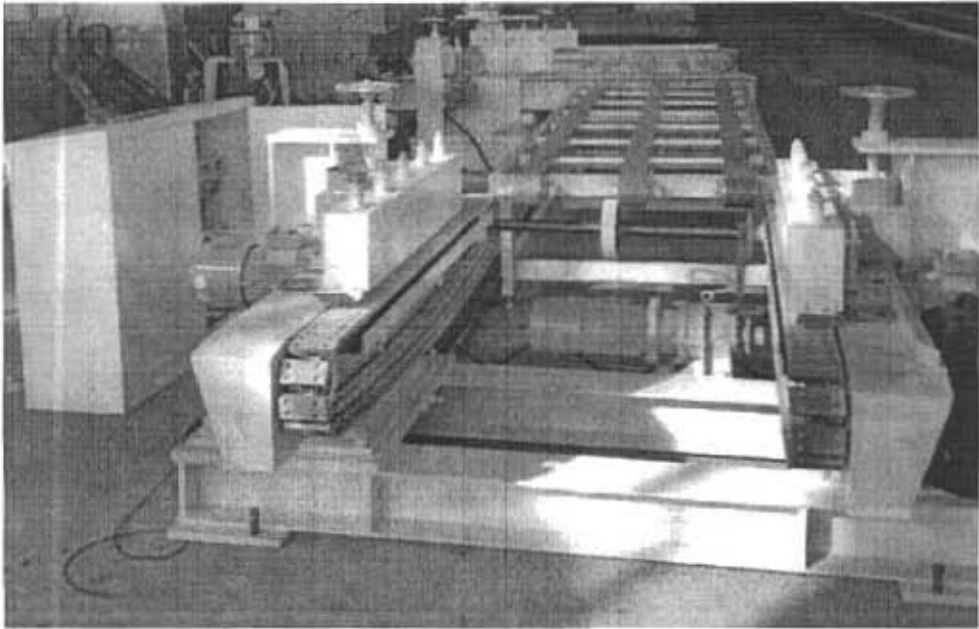
Wide belt sander has the following characteristics:

- A. Using the latest technology, special design of high precision;
- B. High productivity;
- C. Small vibration in operation;
- D. Advanced technology, reliable performance, convenient operation, easy adjustment, simple maintenance.

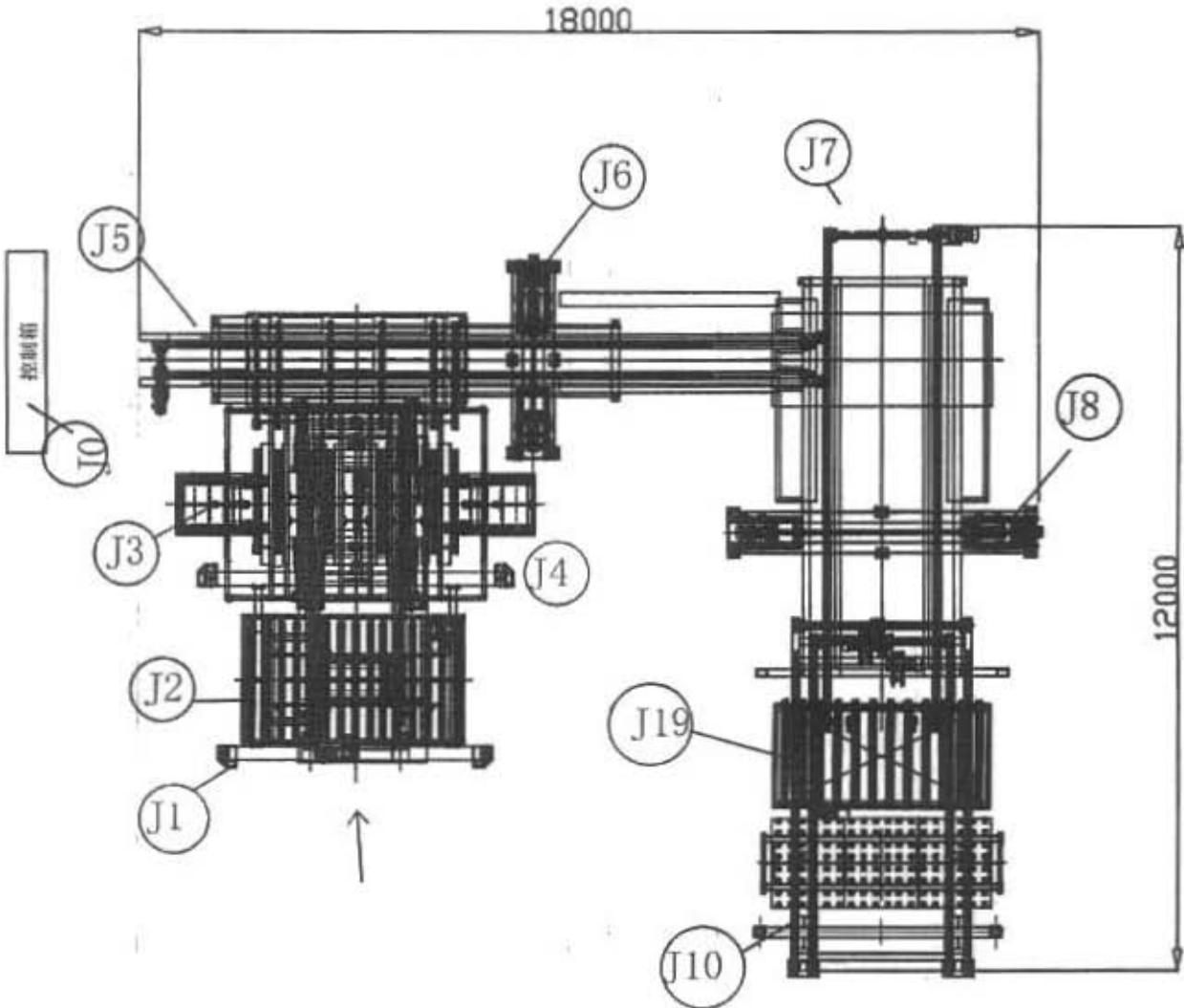
**2.2.3 Main technical parameters:**

Type		SMJ1113A/R	SMJ1116A/R	Remark
Parameters				
Max. Sanding width		1300 mm	1600 mm	
Thickness of board		0.5~30mm	0.5~30mm	
Feeding speed		5~60m/min	5~60m/min	Stepless adjusting
Size of sanding belt		2800X1350 mm	2800X1650 mm	
Main motor power		1X30(37) Kw	1X37(45) Kw	
Total power		36.35(43.35)Kw	43.35(51.35)Kw	
Air ompressed	MPa	0.6	0.6	
	m <sup>3</sup> /h	4	4	
Exhausting air volume		~11000 m <sup>3</sup> /h	~15000 m <sup>3</sup> /h	
Quantitiesof sanding heads		1	1	
Type of sanding heads		1 Roller	1 Roller	lower
Overall dimension(LXWXH)		3155*2160*2200 mm	3555*2160*2200 mm	
Total weight		~10000 Kg	~12000 Kg	

2.3 5×14 FEET Sawing Machine



(for reference)



**2.3.1 Equipment list:**

No.	Item Name	Quantity
J0	Electric control system	1set
J1	Loading machine	1set
J3	Lifting table	1set
J4	Transport roller	1set
J5	Pushing platform	1set
J6	Longitudinal cutter	1set
J7	Pushing platform	1set
J8	Longitudinal cutter	1set
J9	Lifting table	1set
J10	Unloading machine	1set

**2.3.2 Parameter:**

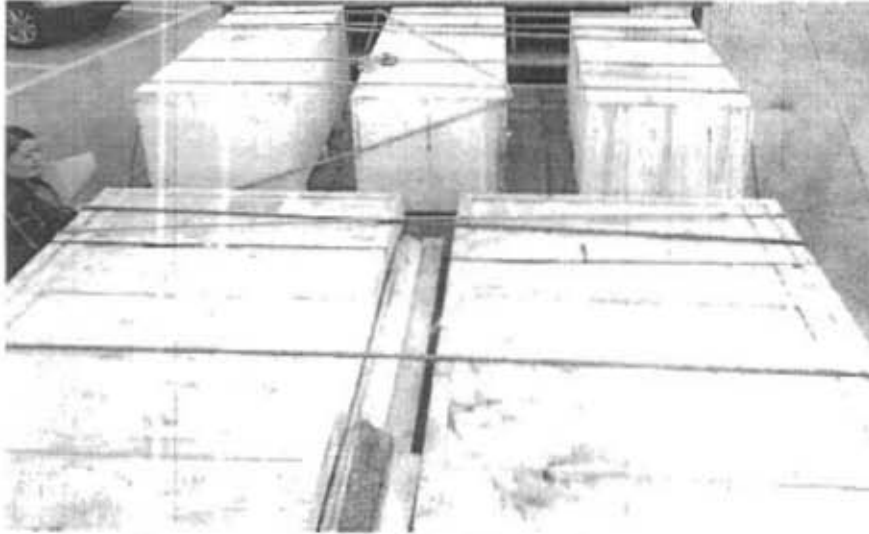
No.	Item Name	Parameter
1	Cutting size	1550×4200 mm
2	Product thickness	0.5~16 mm
3	Sawing speed	6~18 m/min(frequency control)
4	Primary blade speed	5800r/min
5	Primary blade diameter	300×30mm
6	Secondary blade speed	7600r/min
7	Secondary blade diameter	160*25.4mm
8	Power	26.5 kw

## **Part 3**

## **Packing & Shipping**

### **3.1 Packing**

Small and important parts packed with plywood case.



Large and common parts are bundled and uncovered.



### **3.2 Shipping**

According to different countries and product categories. We support:

- 1) Sea transportation
- 2) Air transportation
- 3) Truck transportation
- 4) Express